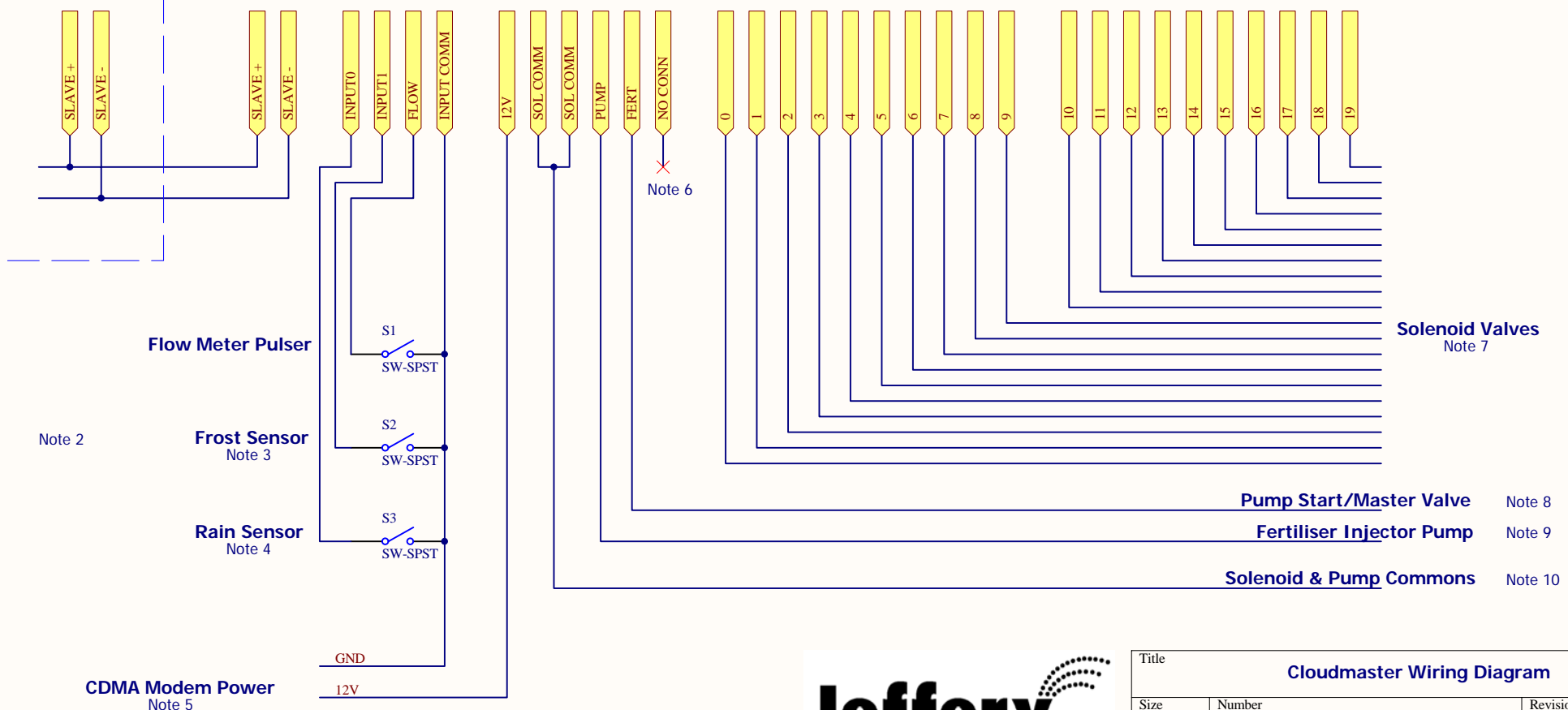




- Notes.**
1. Refer to lightning protection information sheet available from [www.jec.com.au](http://www.jec.com.au) for protection of long comms cable runs
  2. All inputs must be voltage free, closing contact type sensors.
  3. Default function Frost sensor can also be general purpose input or auxiliary supply flow meter.
  4. Default function rain sensor can also be general purpose input.
  5. Power supply to CDMA modem. Lead with fuse to 12V. Not to be used for any other load.
  6. Do not connect
  7. 24VAC station outputs to solenoid valves. 0 to 9 on a 10 station controller.
  8. 24VAC supply to pump/master valve circuit. Comes on whenever any irrigation station is turned on.
  9. 24VAC supply to fertiliser injector pump start circuit or fertiliser control solenoid valve. Can also be auxiliary supply pump/master valve output.
  10. 24VAC common supply to solenoid valves, pump and fertiliser circuits.

**SLAVE UNITS**  
Note 1



Title			Cloudmaster Wiring Diagram		
Size	Number				Revision
A4					1
Date:	03/02/2006	Sheet of			
File:	C:\Documents and Settings\...\Cloudmaster Wiring Diagram.SchDoc				