

Bankstown City Council – Case Study

This case study gives a brief overview of the Cloudmaster central control system as installed at Bankstown City Council. Further information can be obtained at our web site www.jec.com.au or by phoning Brett Jeffery on 02 9144 2666 or 0415 222160.

History

The Cloudmaster system was developed in conjunction with BCC in the late 1980's. The first systems were centrally controlled from a DOS based PC program via telephone land lines.

Present System

The network of controllers has grown to around 65 units installed at 50 remote locations including parks, reserves, tennis courts etc. scattered around the municipality. The PC communicates with the units via a dedicated radio repeater. A GSM modem installed at the PC enables Council staff to send control SMS messages to any site and receive SMS alarm messages from sites from/to their mobile phones. BCC use the system to control and monitor irrigation, floodlighting and hot water systems. Sporting clubs who regularly use the floodlights have been issued with a uniquely encoded keytag transmitter (or PIN numbers for SMS activation) and, within their allocated time windows, turn the floodlights on and off themselves. A bill for lighting time used is generated at the pc for actual lighting time used

Other Communications Options

Although BCC uses a dedicated radio repeater we have been moving more and more to cellular network communications. Staff control commands, alarm SMS messages and sporting club floodlight control commands are sent direct to the Cloudmaster unit at the park rather than being ported via the central PC.

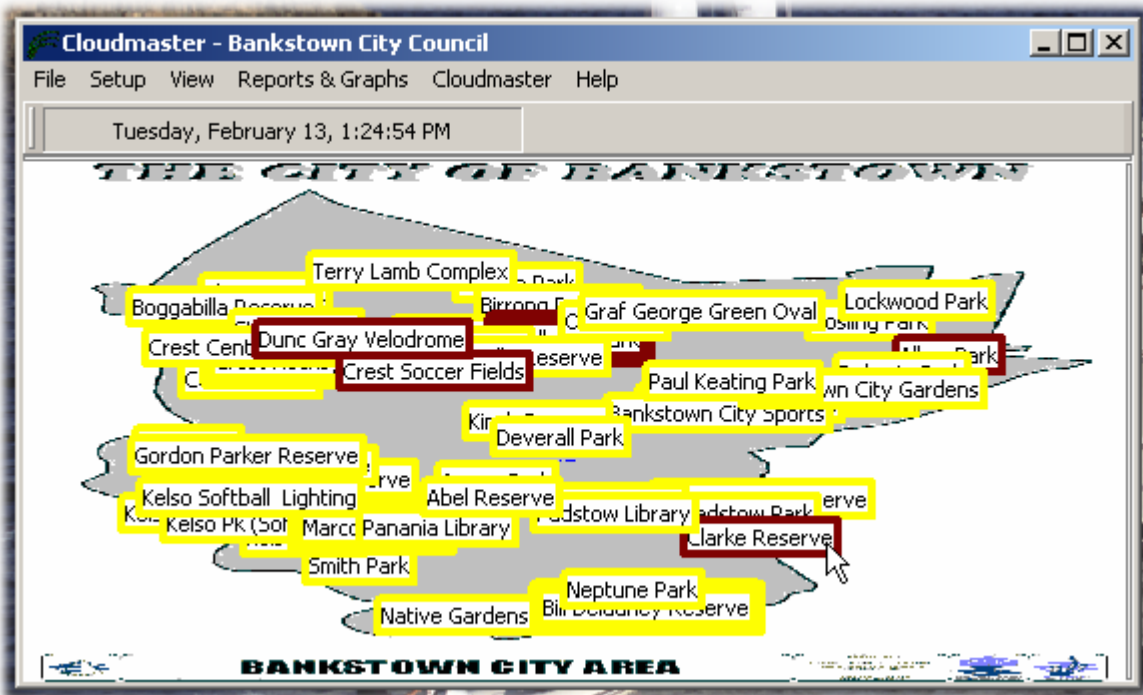
Other Markets

Cloudmaster has been installed into golf, nursery, large landscape as well as council markets

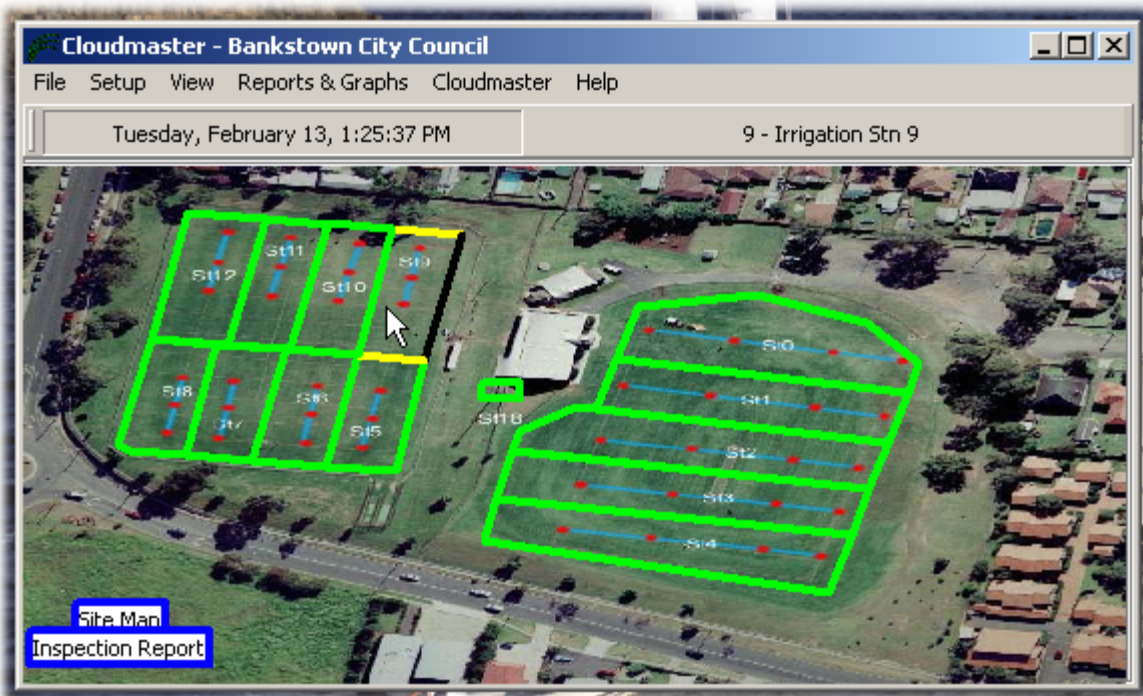
Central Control

The following screen shots shows the graphically based, highly intuitive, Windows Cloudmaster PC software running the BCC database. The first image is the main municipality map with regions representing each park. Double clicking the region brings up an image of the site itself with each irrigation station and floodlighting pole being represented by regions. Colour blinking and right click popup menus make manual override, irrigation schedule maintenance and report generation very easy tasks.

It is important to note that the PC is used as a programming and report generation tool. Irrigation schedules are downloaded to each Cloudmaster unit which then operate as a stand alone units. Onsite changes or override operations can be performed via the keypad/LCD on the Cloudmaster or via SMS.



BCC Main Municipality Map



Example Site Map

Inquiries or comments, please contact Brett Jeffery
 Ph. (02) 91442666 Mob. 0415 222160 Email. brett@jec.com.au Web. www.jec.com.au